

# Bull Collection Sale 2

Don Bull, P. O. Box 596, Wirtz, VA 24184 USA

email: [dbull@bullworks.net](mailto:dbull@bullworks.net)

(Please email with alphanumerical listing ID for availability and shipping – include your name and address)

Click here to return to index page:

<http://bullworks.net/bullsale/>



RB01 Corkscrew Cane. \$200



RB02 Stag handle with carved deer head. The silver end is marked STERLING 54 with a Indian head (possibly Wilcox & Evertsen, New York). \$850



RB03 A very long (11") antler handle with a carved snake wrapped around. It. \$1175





RB04 Small whale's tooth corkscrew. 3.35" x 3".  
\$55



RB05 Henshall corkscrew with serrated button. Well-turned shaft. \$95

**Sold**





RB06 Corkscrew with dog teeth grip. Very good condition. \$79



RB07 Corkscrew with sheath depicting a frog in a kayak fishing. \$35

**Sold**





**Sold**

RB08 Picnic corkscrew with bone sheath. \$45



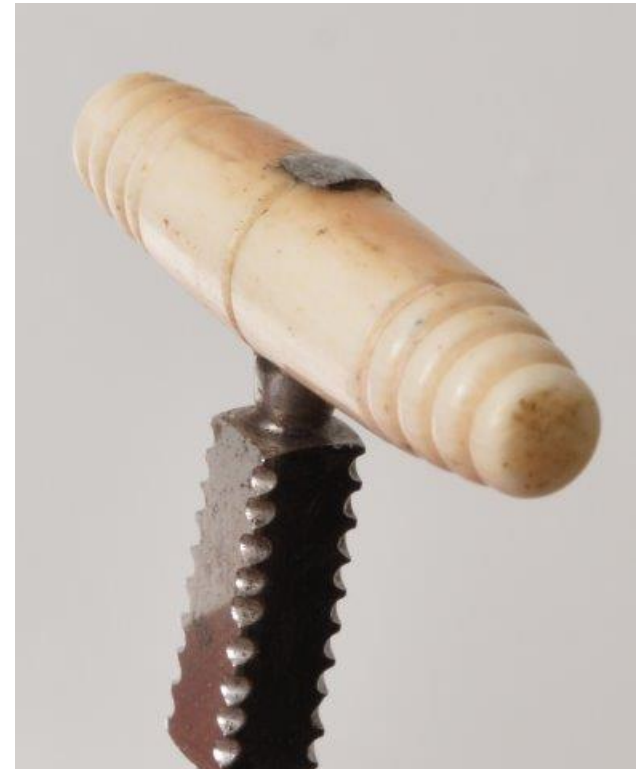
RB09 Miniature Corkscrew showing a bird on a crescent handle. 2" x 1.5". \$65

**Sold**



**Sold**

RB10 Miniature Hercules type corkscrew. 1930s. 2.5" long. \$45



RB11 Miniature Corkscrew. 2" long. \$59

**Sold**



RB12 Wooden devil Corkscrew.  
4" tall. \$59

**Sold**



RB13 Boar's tusk corkscrew  
with Murphy button,  
Monogrammed silver  
mount is marked  
STERLING. 6" x 5". \$295





RB14 Henshall corkscrew with stag handle. Well-turned shaft. Serrated button, Fluted helix. 6" x 4". \$125



RB15 French country corkscrew. \$35

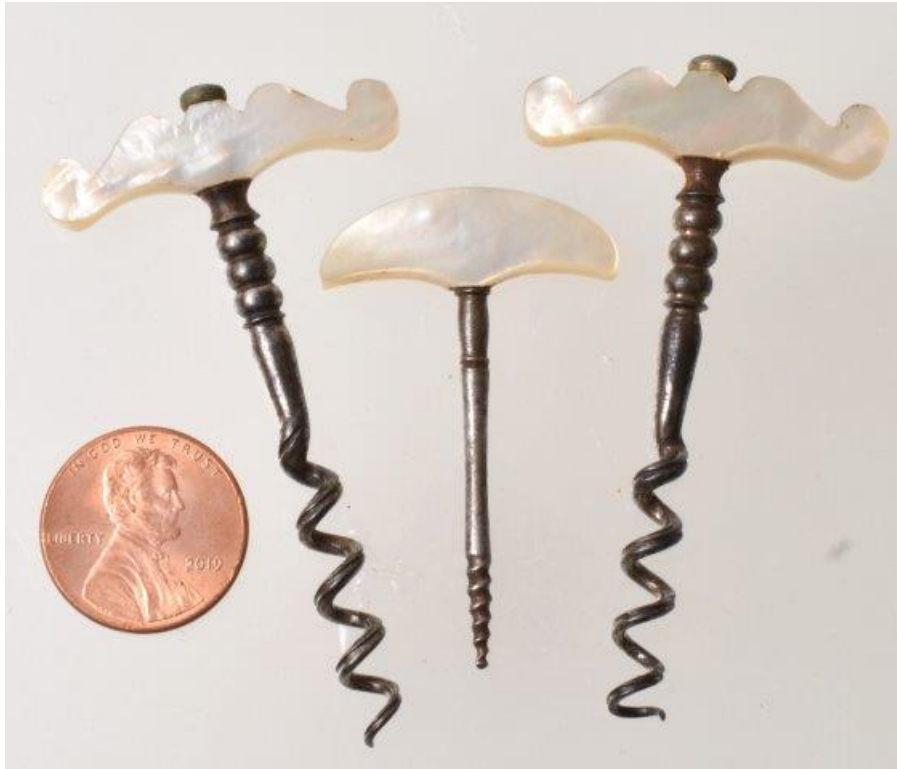
**Sold**



RB16 Nail nipper with interesting locking mechanism. 4.5" long. \$25



RB17 Set of 3 miniature cork removers. Each one has a raised floral design on Mother-of-Pearl. The top one has a gold band around it with scrollwork. The other two have a gold flower at the top. A rare very early find. The top one is 1.25" long. \$975



RB18 Three cork removers with Mother-of-Pearl decorative handles. The long ones are 2.5". \$89





RB19 Miniature double helix  
corkscrew marked S PAT. 1,5". \$89

**Sold**





RB20 2.75" long corkscrew. Early 1800s. \$49

**Sold**



RB21 Miniature corkscrew. 1.75" long. \$35

**Sold**



RB22 1.5" miniature corkscrew. \$45

**Sold**



RB23 Miniature corkscrew. Unusual design. 1.25". \$35



RB24 2" corkcrew. Handle is cocked. \$10.



RB25 Polished horn corkscrew. 3.75" x 2.25". \$49





RB26 Whistle corkscrew. It is a little scarred on top and the sides as seen in the photos. 3.5" x 2.75". \$69

**Sold**



RB27 Polished horn corkscrew. 3.75" x 2.25". \$39



RB28 Polished horn corkscrew. 4" x 2.25". \$39



RB29 Small polished horn  
handle corkscrew with  
silver work. The end is  
marked STERLING. 2.5" x 4:  
\$45



**Sold**



RB30 Tooth carved like a whale. 7". \$49

**Sold**





RB31 Small stag handle corkscrew. 3.25" x 4.25". \$25





RB32 Unusual small stag horn with silver cap marked  
STERLING. 3" x 3.5". \$59



RB33 Small tusk with silver mounts. Large end is monogrammed and marked 925 STERLING 1000. 3.75" x 4.75". \$79

**Sold**

