

Corkscrews for Sale

The Bert Giulian 18th and early 19th Century Collection

Don Bull, P. O. Box 596, Wirtz, VA 24184 USA
email: dbull@bullworks.net

See reduced prices in **RED**.

(Please email with alphanumerical listing ID for availability and shipping – include your name and address)

Click here to return to index page: <http://bullworks.net/bullsale/>

NOTE: WCC in descriptions refers to the *World-Class Corkscrews* book.



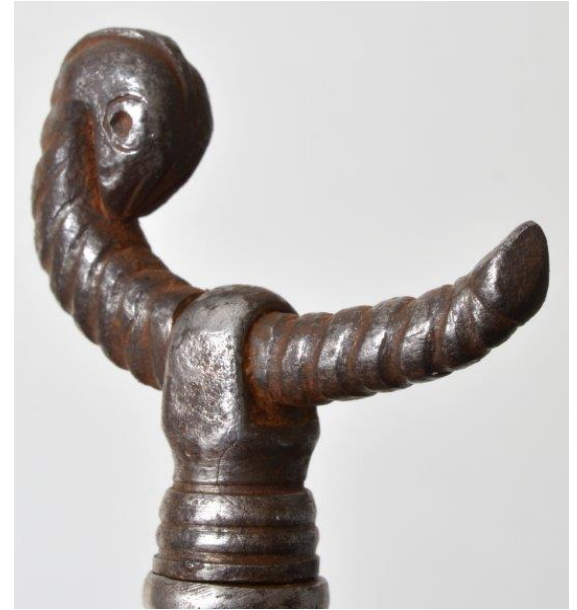
BE007 Elegant French single-finger loop steel corkscrew with applied gilt-silver rope work and beaded columns decoration. Small finial on the bottom of the sheath. Mid-18th century. WCC page 19. \$16,500 **\$6000**



BE008 Ivory container with baluster sheath. Rounded mushroom handle and corkscrew with flat ribbon helix. Brass seal with escutcheon surmounted by a royal crown having seven pearls for a Viscount or Count. French. Early 18th century. The motto on the scroll *PLUTOT MOURIR QUE ME SOUILLER* (To die rather than be defiled) can be traced to Brittany and specifically to the old family name Lorgeril. Alain de Lorgeril accompanied Saint Louis during the Seventh Crusade, 1228-1254, to the Holy Land. The motto was taken and slightly altered by Anne of Brittany (1477-1514), last independent Breton ruler, *Potius Mori Quam Foedari*. This corkscrew coat of arms, however, does not resemble that of Lorgeril. There have been many descendants; one of them may have applied the motto to his own shield. WCC page 31. \$9,500

\$5500





BE087 French steel corkscrew. A serpent with fluted rinds echoed on the sheath. Mid-18th century. WCC page 26. \$12,000

\$3500



BE121 English small burnished steel folding bow with faceted nail heads (studs) as decoration. The largest head is mounted on a gilded copper medallion. Mid-late 18th century. WCC page 43. \$7,500

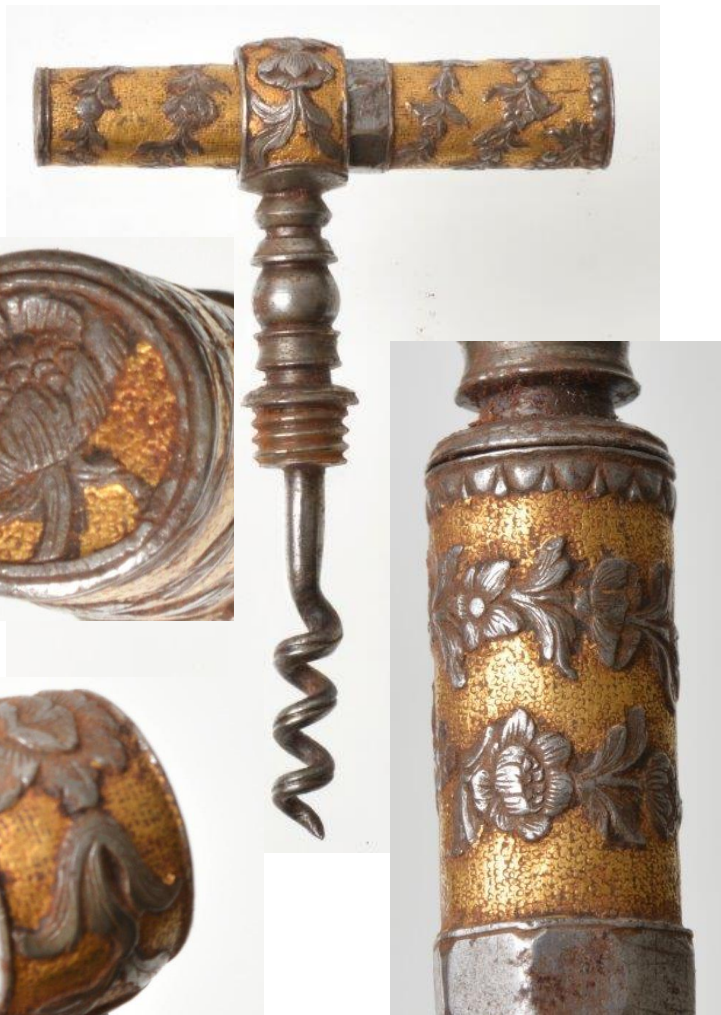
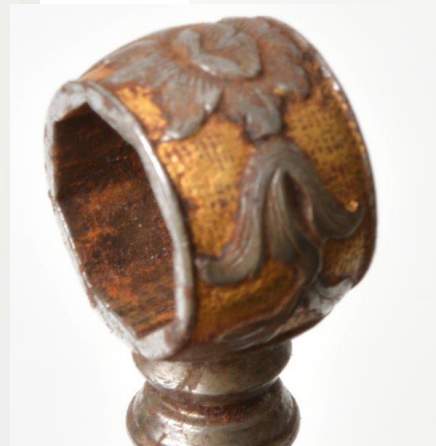
\$2500



Note collar
damage

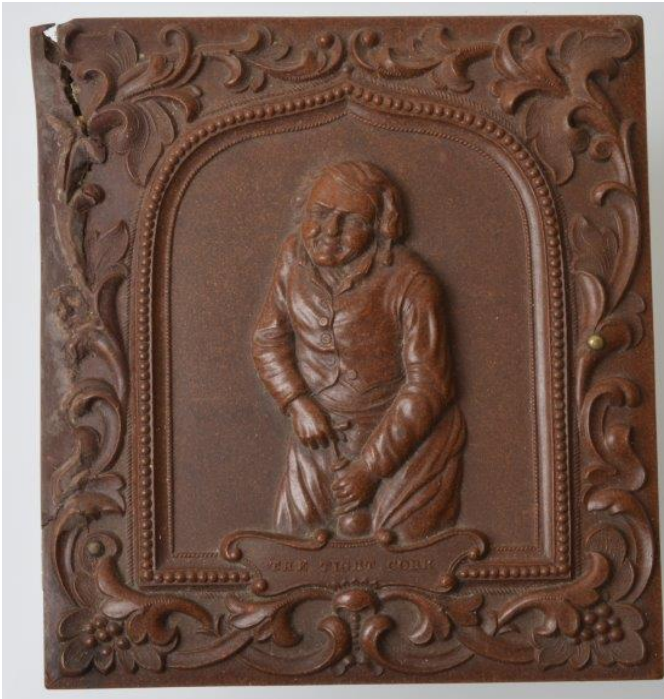


BE189 Dark iron four-pillar rack and pinion corkscrew with narrow rack and small turning handles. The top handle is on a threaded shaft for insertion of the worm into the cork. Octagonal compartment with two screws on top to expose the mechanism. Grooved ribbon worm. This corkscrew was found in Russia, but is of French design. c.1800. 7.5". WCC page 73. \$29,000 **\$5500**



BE246 French picnic corkscrew with extensive chasing and gilding. Recessed, matte gold background contrasts with the steel rosettes and grapevines. Open work in the pedestal at the base of the ring. Third quarter 18th century. Exceptional!!! WCC page 62. \$18,000

\$5000



BE297 Union case featuring THE TIGHT CORK on the cover. Interior has a velvet cushion with framed photo. Note the crack at the top left corner. \$700

\$350

